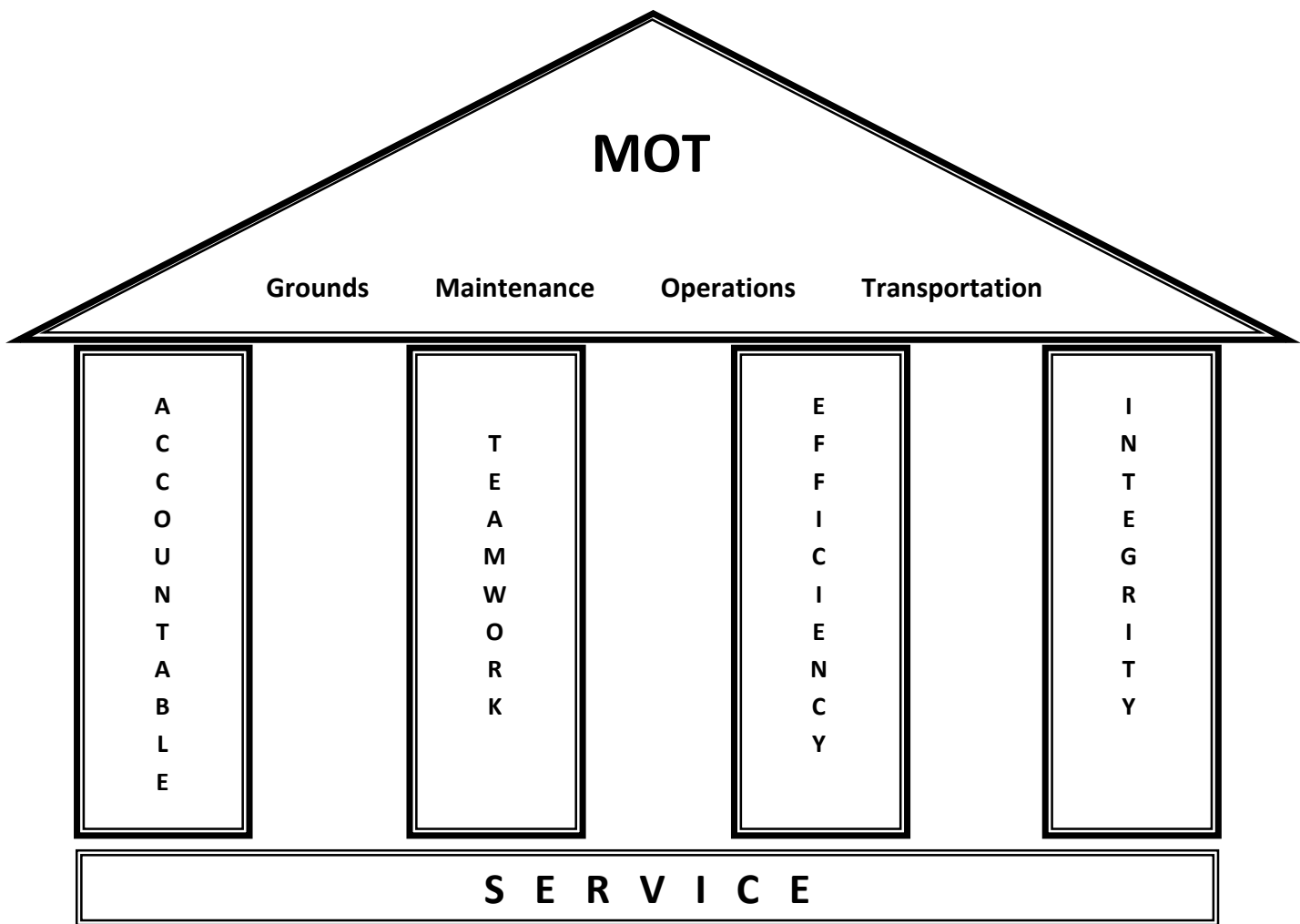


# *“MOTivated to support our schools”*



**Accountability** – All MOT employees will be appropriately held accountable in the performance of their duties

**Teamwork** – All MOT employees will work cooperatively in a professional manner

**Efficiency** – The resources and processes of MOT will be reviewed to ensure maximum productivity and efficiency

**Integrity** – All MOT employees will engage in conduct that demonstrates integrity